

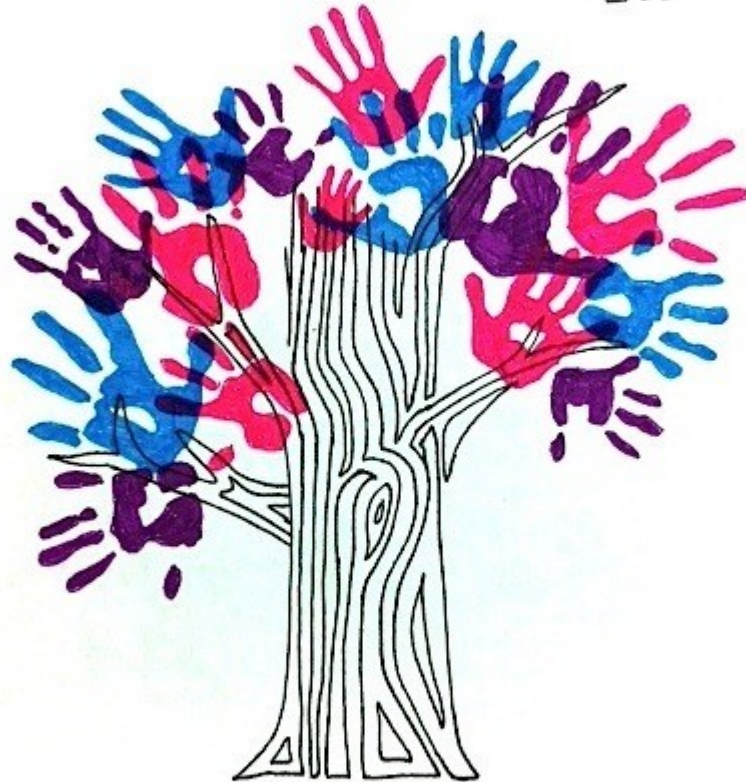
St. Stephen's Episcopal Church

2021 Annual Parish Meeting Report

Sunday, January 31, 2021

Virtual On-Line Conference via Zoom

GROWING TOGETHER



7404 E. Killarney, Wichita, KS 67206
316.634.2513

E-mail: sszc@sbcglobal.net

Web site: www.ststephenszc.org

Parish Office Hours: Monday-Friday

9:00 am-1:00 pm

2020 Vestry Members

Interim Rector	The Rt. Rev. Michael Milliken
Senior Warden	Anne Stephens
Junior Warden	Dave Hudson
Treasurer	Lyndy Wells
Assistant Treasurer	Jane Mossman
Clerk	Amanda Shield

Jorinda Brant (2020)
Julia Hart (2021)
Dave Hudson (2021)
Mike Morrow (2021)
Joe Rothwell (2022)
Amanda Shield (2022)
Robert Shurden (2022)
Anne Stephens (2020)
Lyndy Wells (2020)

2020 Convocation/Convention Delegates & Alternates

Leland Sinclair (2020), Delegate
Anne Stephens (2020), Delegate
Jorinda Brant (2020), Alternate
Ann Jambor (2020), Alternate

2020 Staff

Church School Co-chair	<i>Julia Hart (Volunteer)</i>
Church School Co-chair	<i>Tish Seely (Volunteer)</i>
Choir/Music Director	<i>Ashley Winters</i>
Choir Section Leader	<i>Aubree Brasser</i>
Nurse	<i>Lise Van Arsdale Hansen</i>
	<i>Natalie Lemanski</i>
Organist	<i>Aubrey Watson</i>
Parish Administrator/Bookkeeper	<i>Vera Aikman</i>
Primary Sunday School	<i>Maddie Ramsey</i>
	<i>Sophie Ramsey</i>
Youth Ministry Director	<i>Sydney Anderson</i>
Youth Director Assistant	<i>Matthew Anderson</i>

Auxiliary Staff

Kelvin Biglow, Spotless Janitorial Service
Ron Jones, IT, rd jones & associates
Bryan Nelson, CPA

St. Stephen's Episcopal Church Annual Parish Meeting Agenda

Sunday, January 31, 2021

1:00 pm

On Line Video Conference via Zoom

Order of Business:

- ♦ **Call to Order**
- ♦ **Opening Prayer—The Rt. Rev. Michael Milliken**
- ♦ **Rector Search Announcement—Anne Stephens**
- ♦ **Appointment of the Clerk of the Vestry**
- ♦ **Approval of Minutes from previous Annual Parish Meeting, January 26, 2020**
- ♦ **Report of the Nominating Committee for Vestry & Diocesan Convention Delegates**
- ♦ **Thanks to retiring Vestry—Lyndy Wells**
- ♦ **Select Committee Reports:**
 - Pastoral Care—Barbara Fizer**
 - Youth Group—Sydney Anderson**
 - Treasurer's Report—Lyndy Wells**
 - 2021 Budget (pgs 19-20)**
 - 2020 Financial Statements (pgs. 21-27)**
- ♦ **Acceptance of Reports as included in the Annual Parish Report**
- ♦ **Approved Budget for 2021 (pgs. 17-18) - Lyndy Wells**
- ♦ **Election of Vestry (by acclamation)**
- ♦ **Election of Delegates/Alternates (by acclamation)**
- ♦ **Final thoughts from the Interim Rector — The Rt. Rev. Michael Milliken**
- ♦ **Prayer for New Vestry and blessing — The Rt. Rev. Michael Milliken**
- ♦ **Adjourn—"The meeting is adjourned"**

Written reports included:

Acolytes	Finance Committee
Adult Bible Study	Music and Choir
Altar Guild	Pastoral Care Committee
Book Club	Ushers
Children's Ministry	Youth Ministry
Daughters of the King (DOK)	
Education for Ministry (EFM)	

Parish Statistics 2020

Baptisms	1
Burials & Committals	5

Annual Parish Meeting Minutes

January 26, 2020

Parish Hall of St. Stephen's Episcopal Church

Time: Noon

- I. Call to order – Bishop Mike Milliken called the annual meeting to order at 12:13 p.m.
- II. Opening Prayer – Rt. Rev. Michael Milliken
- III. Appointment of the Clerk of the Annual Parish Meeting
Joe Johnson moved for approval of the appointment of Amanda Shield as Clerk; Becky Samaniego seconded. Motion passed unanimously.
- IV. Invitation for Agenda Items
 - A. Discussion on progress for opening rector search
- V. Casting of ballots
 - A. Ballots were distributed; one per qualified elector.
 - B. Vestry nominees who were present stood to introduce themselves.
- VI. Election of 2020 Nominating Committee
 - A. Jorinda Brant, Jason Hart, Richard Samaniego, Kathy White, Ben Winters
- VII. Written reports –
 - A. Rector's Report and Statistics – The Rt. Rev. Bishop Milliken
 - 1. Thank you to Rev. Patsy Abshier for her service as Deacon.
 - 2. Thank you to the parish for allowing me to be the interim rector.
 - 3. Process for finding a replacement Rector – The parish is ready to begin building the parish profile. Bishop Milliken is meeting with Bishop Bascom to discuss next steps
 - 4. Thank you to everyone who serves the church in numerous capacities. You are vital to the success of our parish.
 - B. Senior Warden – Anne Stephens
 - 1. Thank you for your prayers throughout the year. It was a tough one but your prayers are felt.
 - C. Junior Warden – Dave Hudson will be the next Junior Warden.
 - D. Vacation Bible School– Ashley Winters
 - 1. Fully funded; questionnaire distributed for input on scheduling and format.
 - E. Treasurer's Report – Lyndy Wells
 - 1. Presented highlights from our 2019 financials.

2. 2020 Proposed Budget

- a. Presented 2020 balanced budget.
- b. One unfunded item of \$12,000 to fix the parking lot. Repairs are becoming critical if not addressed soon the entire parking lot will need to be resurfaced.

Leland Sinclair moved to approve the 2020 proposed budget as presented. Becky Samaniego seconded. Motion passed unanimously.

VIII. Legacy Fund – Paul Attwater

- A. Reviewed structure and status of Legacy Fund.

Leland Sinclair moved to approve the 2020 proposed budget as presented. Becky Samaniego seconded. Motion passed unanimously.

IX. By-law review – Discussion on by law revisions.

- A. Discussion on age of eligible vestry.

Vera Aikman moved to accept by-laws. Becky Samaniego seconded. Discussion on age of eligible vestry. Motion passed, 2 opposed.

Leland Sinclair moved to approve all reports as presented. Becky Samaniego seconded. Motion passed unanimously.

X. Results of the vestry election

- A. Joe Rothwell, Amanda Shield, Bob Shurden were elected to 3 year terms
- B. Announcement of Lyndy Wells, Treasurer for 1 year term; Anne Stephens, Senior Warden; Dave Hudson, Junior Warden. 2020 Nominating committee as presented on the ballot

XI. Closing prayer in unison

XII. Adjournment at 1:17 pm

ANNUAL PARISH MEETING REPORTS 2020

Interim Rector's Report

Dear Friends...

It has been about 15 months since I agreed to serve at St. Stephen's Interim Rector. Needless to say, it has been in interesting time!

For a good part of this time we have been forced to worship apart. We have leaned to share worship electronically. And when we could meet in person we often had to engage in social distancing, wearing of masks, and the copious use of hand sanitizer. We could not exchange the peace, shake hands or share hugs.

AND, in addition to our COVID lifestyle, the parish has been engaged in searching for a new rector. This, in itself, is a daunting experience these days. It is not easy to find worthy candidates.

These two experiences have changed St. Stephen's! And I pray these will be good changes. Our COVID experience has taught us to do old things in new ways. While we will, one day, return to in person worship, we will also continue to use new technology to reach out to our shut ins, to those searching for a new church, or those who just want to sleep in on Sunday morning. Along with this the vestry will be looking at new ways to support the parish financially using new on-line ways of giving. These are all good things.

Your new rector will also bring change. He or she, will come with a new vision, a new energy, a new commitment to the pastoral and sacramental ministry of the Church. I pray that you will open your arms to your new rector as you have open them to me. In my time at St. Stephen's, I have felt blessed, loved and accepted as part of the community. You have offered nothing but love and openness to me. And for that I give thanks.

As my time at St. Stephen's draws to a close, please know that you will always have a special place in my heart.

Yours in Christ, Bishop Milliken

Senior Warden Annual Report

WOW! What a year! Once again, I am surprised and blessed at having made it through the myriad of storms virtually unscathed. As we tiptoe into 2021, I see many great things in store for both our congregation and the world in general.

Throughout the pandemic many came together to ensure that worship continued – whether it was online or in person. We have received such good feedback from the online services that we plan on continuing this offering well into the future. By having this online ministry, we hope that we can continue to reach out to those who are traveling or homebound.

In keeping with the themes of inclusiveness, a Rector Search Committee was formed including members of all ages, genders and worship preferences. This committee has worked very hard throughout the year, seeking input from the congregation, taking that input and forming a parish profile that truly tells the story of our church. The committee worked tirelessly throughout the pandemic to call our next Rector. Their work has now been turned over to the Vestry for final consideration and we anticipate that we will have some good news to share with you at the Annual

Parish Meeting. As with any doors that open, others must close and I would like to take this opportunity to thank Bishop Milliken for all of the time and effort he has put into leading our congregation over the past 15 months or so. Even in the midst of the pandemic, he has continued to foster a spirit of love and joy in our congregation and helped to heal many visible and not so visible wounds. His gentle grace, kindness and love will not soon be forgotten. He has played an essential part in the life of St. Stephens and will always be remembered for what he has done for us.

I look forward to the coming year with eager anticipation. I am hopeful that we will see the end of the pandemic and the return of life more closely reminiscent of the “before times”. I remain committed to working with our new rector to continue to reinvigorate and grow St. Stephens while ensuring that St. Stephens remains a warm, welcoming and inclusive environment for all.

Respectfully Submitted: Anne Stephens

Junior Warden Annual Report

1. Building and Grounds Committee voted to meet quarterly rather than monthly, however, due to Covid no meetings were held in 2020.
2. Passed our annual fire inspection and certification of the hood system in the kitchen.
3. HVAC winter service, summer service and filter replacements were done by Comfort Systems. The south Parish Hall rooftop HVAC unit was replaced. Replaced AC/ furnace units and thermostats in Sunday school.
4. Replaced drain in sacristy with plastic. Replaced, or repaired other leaky pipes in bathrooms.
5. Due to Covid, spring and fall work volunteer work parties did not take place. I would like to thank those who stepped and preformed the necessary work on the grounds. I am hopeful that we can have a work day this spring and fall.
6. The sprinklers anti-siphon valve had to be replaced and covered to prevent future freezing. Several sprinkler heads were repaired or replaced.
7. Several dead or dying Locust trees had to be removed and others trimmed. There is a tree at the Mia Norton memorial bench that needs to be replaced.
8. We are continuing to replace lights in the church with more efficient LEDs as needed. A relay was replaced in the sanctuary lighting system.
9. Parking lot was resurfaced and restriped
10. The four by eight foot sign on Killarney was replaced. The posts and frame had to be replaced due to dry rot and ants. Sign was donated by the Seymour family in memory of Paul Seymour.
11. The inside of the church was painted. The Sunday school was done first in anticipation of returning students. In December, the rest of the inside was painted, except for the sanctuary.
12. Work on the Columbarium should start by February 2020. It will not be built in to the wall as was first discussed by Building and Grounds Committee. It will be freestanding but secured to the wall, making it easier to move and less expensive.
13. The vestry voted to contract Hutton Construction to do a facility survey for the future needs of the church structure and a plan for cost and implementation. Don Norton and I will meet with Joe Castillo on January 22nd, to discuss the results of the survey. However, Joe Rothwell has said that the only immediate need is for window replacement, siding replacement and exterior paint. Cost of survey will not be paid by General Operating funds.

Respectfully submitted: Dave Hudson

Treasurer's Annual Report

As everyone will agree, 2020 has been the most unusual year we have experienced in a long time. We began the year with hopes and expectations that our Interim Rector, Bishop Milliken, would stay with us through Easter when we had hoped to have a new, full-time Rector to lead us into our next chapter. Obviously, by the end of February, our church life became disconnected and, thanks to the creativity of Ashley Winters, Julia Hart, Vera Aikman, Bishop Milliken and others, we have been able to stay connected virtually. Kudos to the entire team for such quick and responsive reactions to the pandemic. A special thanks to Bishop Milliken for staying with us for the entire year. Your support has been amazing!

From the start of the shutdown, as ordered by Bishop Bascom, we began to appeal to everyone that had made a pledge to not forget to continue to pay their pledge as the Vestry agreed to continue to pay the staff we value so highly. St. Stephen's parishioners honored that commitment by the Vestry and 97.3% of pledge commitments were met by year end. Due to the fact that we were not physically in church on Sundays for most of the year, our non-pledge income and plate collections were significantly below budget. We were fortunate to receive special gifts and applied for and received an SBA Payment Protection Plan loan that has now been forgiven that has allowed us to receive 101% of our budgeted income.

The pandemic also delayed our search for a new Rector and allowed us to use funds not necessary for a Rector's salary to complete some deferred maintenance including replacing two furnace/air-conditioning units, resurfacing our parking lot and painting the Sunday School classrooms and hallway along with the parish hall. Even with those expenses, we have been able to carry over \$33,000 that will supplement our 2021 budget which is proposed to include a \$10,601 surplus for the year. Although pledges fell short of meeting our full needs for 2021, our carry-over will allow us to employ our new Rector and cover our basic needs for the year. We do not have much resource to deal with ongoing maintenance and repair items, but we will deal with those issues as they arise.

I will review the final budget with you during our virtual Annual Meeting and show the specific numbers. Income is projected to be \$305,506 and expenses are projected to be \$327,905 which would produce a deficit of \$22,399. Our carry over surplus from 2020 of \$33,000 will allow us to fully fund our basic needs in 2021. We must all work together to find new sources of revenue to allow us to maintain our facilities, pay our staff and meet our future program needs.

It has been my pleasure to serve as Treasurer for St. Stephen's and I have appreciated the help of Vera Aikman, Anne Stephens, Dave Hudson, Jane Mossman, Criss Schulz, Susan Gaskill, Jason Hart and Paul Massaria who serve on the Finance Committee. I am pleased that Jane Mossman has agreed to serve as Treasurer this year. She will provide excellent leadership in our finances. Thanks also to our generous parishioners who continue to provide the important financial support we need.

Respectfully Submitted, Lyndy Wells, St. Stephen's Treasurer

Acolytes Annual Report

2020 began with in-person services and our acolytes serving at the altar. We welcomed Alexia Eddie who received training and enthusiastically began to serve. With the exception of a couple of services, there has not been "in-person" services so our acolytes have been idle. Hopefully, this year, once again our church will open and all will enjoy in-person service. When services begin, we will once again need acolytes to serve at the altar. If you would like to serve, training is easy and any age or gender can serve. The only requirement is to be able to carry a candle without tripping. Contact me or call the Parish Office and we will make it happen..

Respectfully Submitted: Anne Stephens

Altar Guild Annual Report

This last year has been quiet and one of waiting for the Altar Guild due to the pandemic. With none of the demands of Easter and Christmas, we are looking forward to this new year and being able to meet with our teams again. We remain a dedicated group who enjoy working together behind the scenes, setting up the altar for services and maintaining the silver and linens in our care. That puts it simply, but if you are interested in learning more about our ministry, feel free to contact me or any member of our guild. Everyone is welcome regardless of age or gender. I can be reached via email at gina@amaddog.com.

Respectfully submitted: Gina Hollingshead, Co-chair

Book Club Annual Report

The pandemic has not slowed down the readers in our parish! Using Free Conference Calls.com, we have continued to share our experiences during this difficult time, by telephone meetings each week. The fellowship has been even more important than our opinions about the books, but we have also continued to read. Our 15 books included Bishop Cathleen Bascom's novel, works of non-fiction, stories of brave women, fantasy, science fiction and some books to just lighten our moods. We are grateful to Mary Sloan who keeps us on task and provides great insight both about books and our common lives.

Respectfully Submitted: Barbara Fizer

Bible & Book Study Annual Report

Despite COVID interruptions, we still had 3 studies in 2020.

- 1) Entering the Passion of Jesus: A Beginner's Study to Holy Week; by Amy-Jill Levine

This program was scheduled for March and April 2020, but was interrupted by COVID restrictions.

- 2) A Survey of the Books of the Apocrypha

This program was held from June-September 2020.

- 3) The History of the Prayer Book

This program was scheduled for October-November 2020, but was interrupted by COVID restrictions.

Respectfully submitted: Mike Morrow

Children's Ministry Annual Report

The goal of the Sunday School program this year was to support our families during the pandemic and help there be inner-generations support between the Sunday School students and the larger church community. Of the 52 Sundays, we were able to gather in person for 17 of them. Of this, our in person attendance, on average was as follows:

January: 12 children per Sunday

February: 10 children per Sunday

March: 7 children per Sunday

Then, the Pandemic happened and in-person worship (and Sunday School) was cancelled. Since then, the Sunday School program has been reinventing and tweaking its format to a way that is most widely accessible. Over the summer, we offered a 13 week program on "How To Be The Church," based largely around the teachings of Paul. We offered the weekly lesson via the St. Stephens' Facebook page and 13 different members of St. Stephens read picture books to accompany the lessons. Prior to this 13 week summer session all 26 children had a homemade workbook mailed out to them to work on while watching the videos. This summer session was widely received by the congregation, who enjoyed tuning into the Facebook page and watching the videos.

Prior to returning to in-person Sunday School, the congregation participated in a virtual version of the annual "blessing of the backpacks." All students were mailed out a religious keychain to put on their backpack that had been blessed by Bishop Mike. They were also sent a card letting them know that another adult in the parish (specifically, an adult that did not have children in the Sunday School program) was praying for their health, safety and success in the upcoming school year. This intergenerational prayer partner pairing was successful. The Hart boys still pray for their adult prayer partners every night in their bedtime prayers.

Beginning in the fourth week of September, we resumed in-person Sunday School until the third week of November. During this time period, our in person attendance, on average was as follows:

September: 9 children per Sunday

October: 6 children per Sunday

November: 4 children per Sunday

During these 6 weeks that we met in person from September through November, we worked on our Jesse Tree Unit, focusing on Old Testament Bible Stories. Prior to the children returning, the Sunday School wing was completely repainted and the classrooms were reconfigured with health safety in mind. All furniture was removed, and the children sat on rugs to help with maintaining safe distances. Masks were required and the Sunday School class time was shortened from one hour to half of an hour.

For Advent and the Christmas Seasons, as we weren't meeting in person, the Sunday School program paired with the Adult Education program to create and offer "Advent in a Bag," to the entire congregation. Using an Advent devotional from Illustrated Ministries, we filled sacks, donated from Dillon's with the devotionals, crafts, and new crayons for folks to have Sunday School at home. This was very enthusiastically received by both young and "young at heart."

Additionally, during the Advent and Christmas seasons, we also mailed out special St. Nicolas greetings with a card signed by Bishop Mike, a St. Nic bookmark and gold-foil covered chocolate coins. For Christmas, all 26 children in our program each were mailed or delivered, via porch drop-off, an age appropriate Bible as a Christmas present from the Church.

This was a year of constant reinvention and tweaking programming to attempt to engage families while we are worshipping together as a church, but separate. We miss seeing our children and look forward to getting back to "normal" in 2021.

Submitted: Love and prayers, Julia Hart, Hazel LaVardi, Tish Seeley

Daughters of the King (DOK) Report

In 2020, the Julian of Norwich Chapter of The Order of Daughters of the King (DOK) worked to meet the challenges of the Coronavirus to continue supporting our mission for prayer, service and evangelism. We are more than ever dedicated to the spread of Christ's Kingdom and the strengthening of the spiritual life of St. Stephens.

Several of our members were instrumental in establishing and chairing SSEC's new Pastoral Care Committee, which aims to build and reinforce close relationships among our congregation. All of our DOK members are participating.

We moved our monthly meetings to a virtual environment beginning in April and averaged 10 participants at each meeting. We trained and initiated one new member this year. In addition, the national and province-level leadership of DOK have provided a wealth of virtual opportunities via Zoom for conversations and study which allow us to interface with members throughout the world. Perhaps it is ironic that COVID has led to creative efforts at communication and renewed energy for our mission. This passage from the Bible resonates with us: *"No testing has overtaken you that is not common to everyone. God is faithful and he will not let you be tested beyond your strength, but will also provide the way out so that you may be able to endure it."* 1 Corinthians 10:13

DOK is also focused on outreach and ongoing spiritual studies. We completed our year-long program study on *The Way of Love* in June, and embarked on a sequence of member-led programs on experiences or readings, such as *Bridges Out of Poverty*. In Spring 2020, we began a relationship with Legacy Ministries, which offers a practical way of connecting underserved youth to job opportunities through social enterprises – Coffee Works, Garden Works and Pottery Works. At present, this initiative is on hold due to COVID. However, all during 2020, we have continued to work with Breakthrough/Episcopal Social Services to provide needed food supplies; ESS is a part of our ongoing mission.

DOK is open to all women in the Episcopal Church or the Anglican Communion. We welcome new members. For more information, please visit with any DOK member, or see <https://www.doknational.org/>.

Respectfully submitted: Nan Myers, President

Education For Ministry (EfM) Report

In May of 2020, we had three graduates from EFM: Carol Fizer and Jane Mossman from St. Stephen's and Jana Millikan from Good Shepherd. Our class this year has eight members: One first year student; four- second years and three-fourth year students.

Education for Ministry (EFM) is a four-year program that covers the core courses of seminary- Hebrew Bible, New Testament, Church History and Theology. Each year stands alone and course work may be taken over the four-year period or a year at a time with space between the years. Basically, whatever is more convenient for a person's life at a given time. While there is a large amount of reading and discussion, there are no papers to be written ever. At our graduation party last year, one of our first year students reminded Teresa and I that the other part of EFM that is so wonderful is that the community that is formed over the years. There is no way to fully describe this formation of community --but people are always amazed how close they become over the four years. The one thing that they all gain is the ability to think theologically about the world in which they live – God truly becomes always present to them.

We meet on Monday evenings at 6:30 pm in the Fireside Room from September to May. The COVID 19 crisis forced to become creative and we met on Zoom for the last part of the spring session and for November and December. Since our group is small (less than 12), Bishop Bascom gave us the right to determine how we wanted to meet after the Christmas season. The group decided to meet in person with everyone wearing masks and only one person per table. There are no goodies at this time, but you may bring from home any snack or drink you want.

Each year costs \$375.00. This amount includes all books for the course of a given year. Scholarships are available which make the cost to each student \$175.00. If you are interested in joining the group or would like to know more, please contact Kitty Shield or Teresa Ryther. If you just want to talk to someone about their experience talk to Mike Morrow, Barbara Fizer, Tom Steele, Susie Hill, Leland Sinclair, Anne Stephens, Tish Seely, Sarah Morrow, Jorinda Brant, Tristan Holmberg, Ann Jambor, Carol Fizer, Jane Mossman, or Jana Millikan.

Respectfully submitted: The Rev. Kitty Shield and Teresa Ryther

Endowment Committee Report

In 2017, St Stephens established an Endowment Fund. The endowment fund is made up of two separate funds. State Street Global is the custodian and manager of the fund under the direction of the Episcopal Church Foundation.

The Permanent Endowment Fund (PEF), which can only be funded by direct donations to the fund from donors. The PEF can only distribute an annual amount of 3% - 5%. The corpus is not to be drawn against beyond the annual distributions. If St Stephens would cease to operate, these funds would go to the diocese. The Permanent Endowment Fund was established in 2020 through parishioner gifts and several Memorial Gifts made in the honor of Sally Attwater. The Permanent Endowment ended the year at \$14,525.00

The General Endowment Fund (GEF) named the Max & Gloria Bleck Endowment fund can be funded by either direct donations from donors or by using funds from the church. If an individual made an undesignated gift to St Stephens then it becomes the property of the church. The vestry could decide to place all or part of these funds into the General Endowment Fund. This fund is also intended to distribute 3% - 5% annually. The vestry may use the principle for special needs if the

church is deemed to be in dire circumstances, meaning its viability as a continuing church is in jeopardy. Use of principle requires a two thirds vote of the vestry at two consecutive regularly scheduled meetings and informing the congregation prior to taking action. In 2020, we made our first distribution of \$3,000 to the parish. The General Endowment Fund ended the year at \$109,216.10

The committee also recommended establishing a founder's society. This society will recognize those families and individuals who make at least a \$10,000 current or deferred gift commitment to either endowment fund by the end of 2021. The society will be named the Homer Moore Founders Society in memory of Homer and his long term financial commitment to St Stephen's church. Homer was a founding member of St Stephen's and provided a lifetime of service to the church.

The Endowment Fund Committee plans to offer parish education to help people better understand how your endowment gifts will be used and how they will not be used. What is important is to know that we have an Endowment that can accept current gifts in any amount, but it serves as a fund that can accept your planned gifts from either your estate or retirement accounts. The ***St Stephen's Endowment Fund*** can be named as a beneficiary of your Will, personal trust, insurance policy, or Individual Retirement Account. The ***St Stephen's Endowment Fund*** can be an appropriate choice for directing your Memorial donations. Your current gift or future gift secures the long term mission of the St Stephen's parish.

A million dollar endowment fund could potentially produce \$30,000 to \$50,000 a year for the church to use towards program, missions, or capital needs. The Endowment Fund Committee will meet regularly in 2021.

If you are considering a planned gift to St Stephen's, please contact Vera to set up a time for you to meet with a member of the committee to discuss a strategy for funding the future of the Church.

Respectfully Submitted: Paul Attwater III, Chairman of the Endowment Fund Committee

Finance Committee Report

This has been an interesting year for the Finance Committee and most of our meetings were virtual via Zoom. The committee members are all strong supporters of the finances and ministries of St. Stephens. The members are Lyndy Wells, Treasurer and Jane Mossman, Assistant Treasurer; Vera Aikman, Susan Gaskill, Jason Hart, Paul Massaria, Criss Schulz, and Vestry liaisons, Anne Stephens, Senior Warden and Dave Hudson, Junior Warden. The committee continues to be good stewards of the approved budget and strive to maintain the expenses. The committee makes recommendations to the vestry on revenue, expenditures, repairs/replacement as needed. All budget overages are reviewed and recommend approval by the vestry.

The committee has been fortunate to have Lyndy Wells as the chair of this committee and his financial background and leadership has provided St. Stephens with a strong financial "footing" and a strong advocate for a balanced budget. He has stepped down as treasurer but will continue to serve on the committee. A heartfelt thank you to Lyndy, I personally have learned much and appreciate working with him. Jane Mossman is the new treasurer and her expertise will continue this strong momentum.

I want to thank The Rt. Rev. Michael Milliken for his leadership and guidance this past year. I

have learned a lot during this year and will “miss our conversations”.

Only by the generous support of our parishioners during this “pandemic”, unprecedented year, our finance position has remained strong. THANK YOU to all.

Respectfully submitted: Vera Aikman

Music and Choir Annual Report

Every year when I write this report, I read the previous year's report just to make sure I cover all the details, don't leave anything out, etc. And this year, with the pandemic, I expected to get on this report and say, “welp, there's been no church, no choir, no Easter or Christmas fanfare, no pageants or musicals”, and that would be that. But as I sit here and reflect, the honest truth is, I've worked harder, longer and overcome more challenges, learned new strategies and together with clergy, created an entirely new way to continue the mission of St. Stephen's this year.

I am so grateful to all those who have continued on this path with me. To Bishop Mike who said “Okay, let's try it” without hesitation when I called him and said “Don't “cancel” church” or “Let's have outside church”, “Or can you please call the Bishop and ask for permission to have one singer in church?”. To Bishop Mike's wife Kathy, for sharing retirement time with us and helping in all the ways I know she did behind the scenes with the multiple recordings they created this year. To Vera for working with us in

uploading, and printing and mailing and getting the word out to the congregation multiple times every week. To Aubrey Watson for still faithfully sitting at the organ bench recording week after week so it at least “sounded” like church. To Ben, Aubree, and Jason for coming in and figuring out how to record with me when it really was important for Good Friday and Easter and Christmas to be in the church. To every single person who figured out how to make a voice recording or a video recording and send it to me, to troubleshoot texts vs. dropbox vs. google drive shares. To those who've come in in the middle of the week to help record and prepare for services to be available for the weekend. And to all of those who actively participated in making services happen in the few weeks this year that we were in person.

The work of the church didn't stop and when this is all over and we come back together in the pews and joyously SING together again, everything learned, created, and put in motion this year will continue. This wasn't a stopgap, and with this newly created ministry, we should all be extremely proud and grateful that our church is here for us now and will continue to be in the future through digital media, streaming and virtual connection.

Respectfully, Ashley Winters

Director of Music and Choirs (and now all things audio/visual :-)

Pastoral Care Committee Report

Under the direction of Bishop Millikan, a committee was formed this fall to coordinate pastoral care during this time of isolation and quarantine. Members are Deacon Patsy Abshier, Vera Aikman, Barbara Fizer, Susan Gaskill, and Gina Hollingshead. The committee meets by phone and created lists of parishioners who might need attention. Volunteers from Daughters of the King, Altar Guild and the general parish were paired with those who were identified. The goal was to make contact via phone, card or flowers at least two times per month. In addition, volunteers are asked to report their contacts to the church office each month. Gina created an online report system which

showed both the volunteers who reported and the number of contacts made. Currently, we have about 20 volunteers covering 20 primary need people and 25 secondary contacts. There is also a volunteer group of 4 families that Vera can call on during unexpected emergencies. The committee also made one contact at Christmas to the entire congregation, a holiday letter and bookmarks made by Carol Fizer, Jamie Kiel and Ann Jambor. The committee is very grateful to all of those who have volunteered their time and energy to the welfare of our community.

Respectfully submitted: Barbara Fizer, Chair

Rector Search Committee Report

In early March 2020, the Vestry approved the formation of a Search Committee to begin the process of calling a new Rector to St. Stephen's. The committee consisted of the following dedicated and thoughtful parishioners: Dale Graham (Chairman), Barbara Fizer, Jason Hart, Gina Hollingshead, Janice Knox, Richard Shield and Joe Rothwell. Debbie Kremers, Missioner for Transitions for the Episcopal Diocese of Kansas, provided assistance and guidance in the process. The Vestry, Bishop Milliken and Vera provided insight, input and administrative assistance thorough out the search.

The Episcopal Diocese of Kansas recommended the Search Committee implement a series of phases in its search. In keeping with that charge, the Search Committee first developed and conducted a parish priest search survey.

Based on the data collected from the parish survey and supporting information, the committee developed and made available Ministry and Parish Profiles. Both profiles were posted on the Diocesan and other websites announcing that applications were being accepted for our rector position. The Diocese conducted initial screening of all applications received from priests interested in our position.

In preparation for the interviews, the Search Committee and Vestry developed questions and the procedures to be used during the Zoom meetings. The questions focused on the following rector skill set categories: leadership/management, spirituality/spiritual life, liturgy, parish life and some general questions.

Following the first round of interviews, the Search Committee and Vestry discussed the candidates and decided who would move forward to the second round of Zoom interviews. At this point, a Vestry member conducted the reference checks on the selected candidate.

In January, The Search Committee and Vestry conducted the second Zoom interview and, then, reviewed the references and discussed the results of the second interview. This conversation resulted in the Search Committee recommending a candidate to the vestry.

A multi-step process offered both opportunities and challenges. Without a doubt, the greatest challenge has been the pandemic. That being said, the Search Committee is confident that our prayers have been answered and the future is very bright for St. Stephen's.

God's blessings to all.
Respectfully submitted, *Dale Graham*

Stewardship Annual Report

Stewardship seeks to activate all of our talents and gifts. That's a bit of a challenge during a pandemic, but SSEC has risen to the challenge through online services and zoomed get-togethers. If you are looking for a place to get involved in the Church, please ask. If you have an idea (or even an inkling) about a way to engage in fellowship, please send it along!

Because it's annual report time and it's expected, I'll talk about the fundraising side of Stewardship. As you know, pledging helps guide the budget, allowing the Church to plan for our needs, ministry, and outreach. In terms of pledges, this year we added 6 new pledges to the rolls. While we lost a handful of pledges (due to death, family matters, or transfer of membership), we still had 19 pledging givers increase their giving. In total, we had 68 pledging givers.

While we continue to find givers that see, and then meet, special needs of our church, those "surprise" gifts are not the sort of gifts we can or should count on. We continue to be a congregation of consistent and intentional givers, even in times of crisis, chaos, and transition. As you'll see in the Finance Committee report, they've been busy trying to be good stewards with your gifts, turning in less-than-budget expenditures while formulating a balanced budget for next year. I am hopeful that, with Christ's help, we can continue to be mindful in our giving.

As always, invitation and encouragement are important parts of Stewardship. I invite you to send a personal email or text message to your friends in the Church to say THANK YOU! And in the same way, if you're feeling a little lost or overwhelmed, please, PLEASE reach out and let someone know.

In Christian love and fellowship, Jason Hart, Stewardship Chair

Usher's Annual Report

COORDINATOR: DON NORTON 259-1412

This year we are all hoping for the return to normal and the return to in-person services. But we must have patience as it will take time, but it will happen at some point.

Once again we would like to add a third person (and couples welcome) to each team for reason of additional Sunday morning greeting and assistance reasons and for having a built-in alternate for any given Sunday. Justin Cooke, Mike Mann and Richard Samaniego joined last year. If you would like to volunteer to be on a specific Sunday or team, please let me know.

First Sunday

John Alefs, Joe and Devon Rothwell, (your name here)

Second Sunday

Rick Gaskill, Hank Hoesli, Mike Mann

Third Sunday

Mike Floyd, Chris Graham, Justin Cooke

Fourth Sunday

Doug Ramsey, David Hudson, Richard Samaniego

Fifth Sunday & Alternates

Don Norton, Chris Schulz, Joe Johnson, (your name here)

Thanks once again for everyone's devoted service to our Parish and to those who served during our limited in-person services this past year. If you are interested please contact me at church, cell phone 259-1412, or by email norton75@swbell.net

Respectfully submitted: Don Norton, Coordinator

Youth Ministry Annual Report

2020 presented us with a unique set of challenges, but that allowed us to explore alternate solutions that we wouldn't have had the opportunity to do otherwise. This year our youth, ages 5th through 12th grade, went virtual. In the beginning of the pandemic (March-June) we met every Sunday via Zoom - 2 pm with our Juniors (5th-8th grade) and 7 pm with our Seniors (9th-12th grade).

When we came back together in the Fall for our 2020-2021 youth group/school year, we knew things would look a little different still. To accommodate for fluctuating schedules and keep everyone as safe as possible, we, along with the youth, decided to go hybrid on Sunday mornings for our Junior youth and virtual on Thursday evenings for our Senior group.

And, as we all know too well, things continue to change and we are currently back to virtual only for both Junior and Seniors. Now we are meeting as one big group at 7pm on Thursday evenings.

To help keep youth engaged and connected, we hosted virtual game nights in May and November, with our next happening in early February. These nights have included trivia, Scattergories, Bingo, scavenger hunts, and coming soon, a virtual escape room.

We've taught lessons on the "new normal" and how we, as Christians, can respond. We've also taught lessons on thankfulness and compassion, encouraging youth to lead with compassion and vocalize what they have to be thankful for - even the small stuff.

The youth group for 2020 continued their work of giving-back to the community and growing deeper in their faith. For the holiday season, we were a part of the local food drive for Inter-Faith Ministries, Operation Holiday. We partnered with our parish and were able to make contribution of nearly \$1,000 in non-perishable items and cash to assist with their cause - our largest donation yet in the four years we have hosted the drive! Thank you again to everyone who helped make that a reality.

Our goal for 2021 is to continue to grow and learn from each other through God's love and many blessings. We are starting to explore foundational elements of the church and what it means to be part of this community. We thank you for all your support from 2020, and are very excited to see what 2021 has in store!

Respectfully Submitted: Matthew and Sydney Anderson, Youth Directors

Report of the Nominating Committee for 2021

NOMINATED (to be elected)

Senior Warden	Anne Stephens	One Year Term (2021)
Junior Warden	Dave Hudson	One Year Term (2021)
Treasurer	Jane Mossman	One Year Term (2021)
Secretary/Clerk	Amanda Shield	One Year Term (2021)

Vestry:

(Three (3) three year terms to be elected)

Jorinda Brant	Three year term (2021, 2022, 2023)
Jane Mossman	Three year term (2021, 2022, 2023)
Anne Stephens	Three year term (2021, 2022, 2023)

Continuing Vestry Members:

Julia Hart	Three year term, one year remaining (2021)
Dave Hudson	Three year term, one year remaining (2021)
Mike Morrow	Three year term, one year remaining (2021)
Joe Rothwell	Three year term, two years remaining (2021, 2022)
Amanda Shield	Three year term, two years remaining (2021, 2022)
Robert Shurden	Three year term, two years remaining (2021, 2022)

Convocation/Convention Delegate:

Jorinda Brant	Delegate	Two Year Term (2021-2022)
Lora White	Delegate	Two Year Term (2021-2022)
Jason Hart	Alternate	Two Year Term (2021-2022)
Richard Shield	Alternate	Two Year Term (2021-2022)

Nominating Committee for 2021:

Lyndy Wells (Appointed by the Vestry)
Suzanne Graham
Gina Hollingshead
Karen Norton
Brad Vining

2021 APPROVED BUDGET	2018 Actual	2019 Actuals	2020 Budg- et	2020 Actuals	2021 Proposed Budget	2021 Proposed Budget (Rector hire 4/1/21)
INCOME						
Plate Income	1,888	2,037	2,000	392	1,000	1,000
Current Yr. Pledged Receipts	306,142	290,170	288,232	280,551	279,846	279,846
Prior Yr. Pledged Receipts	1,872	3,252	2,500	1,475	1,500	1,500
Pre-paid Pledge Receipts	-					
Non-pledged Receipts	23,945	22,825	22,800	6,716	13,500	13,500
Interest/Investment	55	68	70	24	50	50
WCF Endowment	2,077	2,074	2,075	2,010	2,010	2,010
SSEC Legacy			3,000	3,000	3,000	3,000
In-Kind Non Cash	-	1,021	0	212	0	0
PayCheck Protection Loan	-	0	0	10,305	0	0
Community Group	3,478	3,960	4,000	4,568	4,600	4,600
Interfund Transfer				18,650	0	0
Income Totals	339,457	325,407	324,677	327,903	305,506	305,506
EXPENSES						
Interim Rector			12,500	14,300	0	1,391
Rector	43,250	40,576	14,500	0	40,000	30,000
Parish Administrator	25,148	25,275	25,500	24,923	25,000	25,000
Music Director	12,000	12,000	12,000	13,500	12,000	12,000
Bookkeeper	2,400	1,400	1,500	1,400	1,200	1,200
Music Section Leader	2,000	1,900	1,900	2,550	1,900	1,900
Youth Director	12,000	8,286	8,600	8,600	8,600	8,600
Assistant Youth Director	1,889	1,819	1,900	2,153	1,900	1,900
Supply Priest	2,985	6,598	1,800	1,250	1,500	1,500
Organist	6,215	6,355	6,400	6,600	6,600	6,600
Primary Sunday School Staff	2,372	1,558	1,500	1,406	1,450	1,450
Nursery Staff	5,066	4,802	4,500	4,196	4,200	4,200
VBS Staff	3,000	2,000	2,000	0	2,000	2,000
Payroll Taxes	4,157	3,784	3,485	4,402	4,400	4,400
Interim Rector's Travel		1,190	3,300	5,244	0	437
Supply Priest Mileage			600	460	500	500
Rector's Travel Expenses	2,500	2,500	2,500	0	2,500	1,875
Rector's Continuing Ed	1,687	1,200	0	0	1,200	1,200
Rector's Pension Fund	13,500	13,500	4,500	0	12,600	9,450
Rector's Health Ins	11,940	10,860	10,000	0	34,686	26,015
Rector's Housing	33,250	31,194	11,100	0	30,000	22,500
Rector Other	446	326	500	0	500	500
Youth Travel Expense	223	0	200	0	200	200
Deacon's Expense		409	400	0	0	0
Rector Search/ Moving Expense			20,000	384		

2021 PROPOSE BUDGET	2018 Actual	2019 Actuals	2020 Budg- et	2020 Actuals	2021 Proposed Budget	2021 Proposed Budget (Rector hire 4/1/21)
Supplies	3,572	2,778	2,700	2,153	2,200	2,200
Postage	1,104	1,539	1,500	1,507	2,000	2,000
Telephone/Internet	4,694	4,420	3,800	4,508	4,000	4,000
Advertising	1,360	482	150	170	170	170
Leased Equip/Maintenance	12,079	10,212	11,000	10,315	10,815	10,815
Printing	585	295	700	659	700	700
IT/Software/Hardware/Fees		1,609	2,000	2,491	2,500	2,500
In-Kind Expense	-	1,021		212	0	0
Diocesan Apportionment	55,704	58,896	60,996	60,996	55,656	55,656
Convention Expense	3,289	756	1,000	35	1,000	1,000
Professional Fees	1,700	2,507	2,600	1,771	1,800	1,800
Dues/Subscriptions	78	40	50	20	50	50
Bank/Other Service Fees/Taxes	401	618	400	509	500	500
Workers Comp Insurance	422	904	910	916	916	916
Vestry Expense		391	100	0	100	100
Audio, Visual, Virtual Expense				1,141	1,000	1,000
Adult Education	198	0	200	133	200	200
Youth Ministry	141	(313)	(313)	(269)	200	200
Children's Ministry	458	74	100	45	100	100
Nursery Program	82	0	100	0	100	100
Library/Periodicals	100	110	100	80	100	100
Fellowship Program	2,171	1,354	2,000	1,829	2,000	2,000
EDOK Youth Events	451	27	500	0	500	500
VBS Supplies	1,592	99	1,500	(855)	2,000	2,000
Other Ministry		173	0	379	300	300
Altar Supplies	967	1,065	1,100	817	900	900
Worship Program	369	253	200	200	200	200
Flower Fund	181	(224)	720	34	720	720
Stewardship	418	0	100	100	100	100
Lawn Maintenance	6,300	7,000	4,650	4,146	4,200	4,200
Utilities	17,994	19,694	21,000	16,964	17,500	17,500
Insurance	17,140	18,487	18,000	18,843	18,900	18,900
Maintenance/Repairs	10,086	8,993	9,600	14,040	10,000	10,000
Supplies	2,241	1,839	2,000	2,685	2,000	2,000
Snow Removal	700	1,250	2,000	1,000	2,000	2,000
Janitorial Service	9,800	9,600	10,150	10,696	11,000	11,000
Building/Equipment	-	0	4,000	25,792		
Total Expenses	\$ 342,405	\$ 333,481	\$ 316,798	\$ 275,430	\$ 349,363	\$ 321,245
Surplus/(Deficit)	(2,948)	(8,074)	7,879	52,473	(43,857)	(15,739)
					33,000	33,000
					\$ (10,857)	\$ 17,261

St Stephens Episcopal Church

Statement of Financial Position

December 31, 2020

	Year Begin Balance	Year to Date Balance	Year to Date Change	Balance Last Month	Year to Date Last Year
Assets					
Checking & Petty Cash					
101 _Gen Operating/checking	27,553.13	97,417.80	69,864.67	66,473.77	27,553.13
105 PayPal Account	0.00	2,884.44	2,884.44	2,434.44	0.00
Checking & Petty Cash Totals:	27,553.13	100,302.24	72,749.11	68,908.21	27,553.13
Savings & Investments					
104 General Operating/savings	13,424.94	13,448.52	23.58	13,447.38	13,424.94
Other Current Assets					
118 Accounts receivable	0.00	0.00	0.00	0.00	0.00
119 Pre-paid	0.00	0.00	0.00	0.00	0.00
Other Current Assets Totals:	0.00	0.00	0.00	0.00	0.00
Non-Operating Assets					
120 Rector Discretionary Fund (901D)	450.00	2,084.00	1,634.00	1,684.00	450.00
121 Deacon's Discretionary Fund (936D)	236.01	236.01	0.00	236.01	236.01
123 Memorial Fund (900D)	16,802.11	16,457.49	(344.62)	30,988.79	16,802.11
127 Six Month Reserve Fund (950D)	60,238.27	60,406.93	168.66	60,406.93	60,238.27
128 Repair & Replacement Fund (940)	13,426.80	6,003.59	(7,423.21)	6,003.33	13,426.80
131 State Farm Life Ins Beneficiary (962D)	33,864.91	35,322.49	1,457.58	35,322.49	33,864.91
Non-Operating Assets Totals:	125,018.10	120,510.51	(4,507.59)	134,641.55	125,018.10
Other Current Assets					
132 SSEC Quasi Endowment Account	99,004.53	109,216.10	10,211.57	96,404.40	99,004.53
133 SSEC Permanent Endowment Account (97	0.00	14,525.00	14,525.00	0.00	0.00
Other Current Assets Totals:	99,004.53	123,741.10	24,736.57	96,404.40	99,004.53
Land, Buildings & Fixed Assets					
150 Land	119,676.00	119,676.00	0.00	119,676.00	119,676.00
151 Building & grounds	926,159.85	926,159.85	0.00	926,159.85	926,159.85
152 Furniture & equipment	141,816.01	141,816.01	0.00	141,816.01	141,816.01
Land, Buildings & Fixed Assets Totals:	1,187,651.86	1,187,651.86	0.00	1,187,651.86	1,187,651.86
Total Assets:	1,452,652.56	1,545,654.23	93,001.67	1,501,053.40	1,452,652.56
Liabilities					
Payroll Withholdings					
201 Federal/Income tax withholding	484.00	434.00	(50.00)	408.00	484.00
202 FICA and M/C tax payable	355.82	497.32	141.50	466.36	355.82
203 Kansas/Income tax withholding	128.00	(308.00)	(436.00)	(318.00)	128.00
Payroll Withholdings Totals:	967.82	623.32	(344.50)	556.36	967.82
Other Current Liabilities					
220 Deferred Income/Accounts pay	300.00	300.00	0.00	300.00	300.00
221 Pre Paid Pledges	37,784.02	60,132.13	22,348.11	19,740.00	37,784.02

St Stephens Episcopal Church

Statement of Financial Position

December 31, 2020

	Year Begin Balance	Year to Date Balance	Year to Date Change	Balance Last Month	Year to Date Last Year
Other Current Liabilities Totals:	38,084.02	60,432.13	22,348.11	20,040.00	38,084.02
Total Liabilities:	39,051.84	61,055.45	22,003.61	20,596.36	39,051.84
Net Assets					
Fund Balances - Equity					
300 Fund Balance - Operations	(29,075.78)	(29,075.78)	0.00	(29,075.78)	(21,151.61)
310 Fund Balance - Build/equip	1,187,651.86	1,187,651.86	0.00	1,187,651.86	1,187,651.86
Fund Balances - Equity Totals:	1,158,576.08	1,158,576.08	0.00	1,158,576.08	1,166,500.25
Dedicated Accounts					
Without Donor Restrictions	110,413.51	110,642.08	228.57	110,920.38	110,413.51
With Donor Restrictions	144,611.13	163,213.64	18,602.51	150,013.58	144,611.13
Dedicated Accounts Totals:	255,024.64	273,855.72	18,831.08	260,933.96	255,024.64
Current Period Changes to Net Assets	0.00	52,166.98	52,166.98	60,947.00	(7,924.17)
Total Net Assets:	1,413,600.72	1,484,598.78	70,998.06	1,480,457.04	1,413,600.72
Total Liabilities & Net Assets:	1,452,652.56	1,545,654.23	93,001.67	1,501,053.40	1,452,652.56

St Stephens Episcopal Church

Statement of Activities

December 31, 2020

Account Shortcut and Description	Current Month Actual	Current Month Budget	YTD Actual	YTD Budget	YTD Last Year	Annual Budget	YTD as % of Annual Budget
Income							
Receipts							
405 Plate Income	0.00	166.67	392.00	2,000.00	2,037.58	2,000.00	19.60
410 Current year pledged receipts	19,250.87	24,019.33	280,551.05	288,232.00	290,319.61	288,232.00	97.33
420 Prior year pledged receipts	(4,400.00)	0.00	1,475.00	2,500.00	3,252.27	2,500.00	59.00
425 Pre-paid pledge receipts	0.00	0.00	0.00	0.00	0.00	0.00	0.00
430 Non-pledged receipts	935.58	1,900.00	6,715.58	22,800.00	22,825.00	22,800.00	29.45
Receipts Totals:	15,786.45	26,086.00	289,133.63	315,532.00	318,434.46	315,532.00	91.63
Other Income							
435 Interest/Investment Income	1.14	5.83	23.81	70.00	68.06	70.00	34.01
436 WCF endowment distribution	0.00	0.00	2,009.99	2,075.00	2,074.11	2,075.00	96.86
439 Pre-paid Diocesan appropriation	0.00	0.00	0.00	0.00	0.00	0.00	0.00
440 In Kind Non Cash Contributions	0.00	0.00	212.48	0.00	1,807.02	0.00	0.00
432 SSEC Legacy Endowment Fund Income	0.00	0.00	3,000.00	3,000.00	0.00	3,000.00	100.00
444 Interfund transfers	0.00	0.00	18,650.00	0.00	0.00	0.00	0.00
445 Gain (loss) sale of asset	0.00	0.00	0.00	0.00	0.00	0.00	0.00
963 Miscellaneous Income	0.00	0.00	0.00	0.00	0.00	0.00	0.00
443 PayCheck Protection Loan	0.00	0.00	10,305.00	0.00	0.00	0.00	0.00
Other Income Totals:	1.14	5.83	34,201.28	5,145.00	3,949.19	5,145.00	664.75
Building Income							
475 Community group donations	320.00	300.00	4,568.00	4,000.00	3,960.00	4,000.00	114.20
Income Totals:	16,107.59	26,391.83	327,902.91	324,677.00	326,343.65	324,677.00	100.99
Expense							
Pastoral Salaries							
510 Rector	0.00	3,625.00	0.00	14,500.00	40,575.92	14,500.00	0.00

Account Shortcut and Description

	Current Month Actual	Current Month Budget	YTD Actual	YTD Budget	YTD Last Year	Annual Budget	YTD as % of Annual Budget
511 Interim Priest	1,200.00	0.00	14,300.00	12,500.00	0.00	12,500.00	114.40
Pastoral Salaries Totals:	1,200.00	3,625.00	14,300.00	27,000.00	40,575.92	27,000.00	52.96
Staff Salaries							
512 Parish Administrator	2,025.00	2,125.00	24,922.50	25,500.00	25,275.00	25,500.00	97.73
513 Music Director	1,000.00	1,000.00	13,500.00	12,000.00	12,000.00	12,000.00	112.50
515 Music Dept Section Leader	200.00	200.00	2,550.00	1,900.00	1,900.00	1,900.00	134.21
518 Youth Director	727.28	716.67	8,600.08	8,600.00	8,285.29	8,600.00	100.00
543 VBS Staff Compensation	0.00	0.00	0.00	2,000.00	2,000.00	2,000.00	0.00
Staff Salaries Totals:	3,952.28	4,041.67	49,572.58	50,000.00	49,460.29	50,000.00	99.15
Contract Staff Reimbursement							
514 Bookkeeper	100.00	200.00	1,400.00	1,500.00	1,400.00	1,500.00	93.33
517 Asst Youth Director	225.00	202.00	2,152.50	1,900.00	1,818.75	1,900.00	113.28
519 Supply Priest	0.00	50.00	1,250.00	1,800.00	6,598.21	1,800.00	69.44
540 Organist Compensation	480.00	680.00	6,600.00	6,400.00	6,355.00	6,400.00	103.12
541 Nursery Staff Compensation	180.00	375.00	4,196.05	4,500.00	4,802.50	4,500.00	93.24
542 Primary Sunday School Staff Compensation	60.00	125.00	1,406.25	1,500.00	1,558.00	1,500.00	93.75
Contract Staff Reimbursement Totals:	1,045.00	1,632.00	17,004.80	17,600.00	22,532.46	17,600.00	96.62
Taxes, Allowances & Benefits							
520 Payroll taxes	363.16	290.42	4,402.42	3,485.00	3,783.69	3,485.00	126.32
521 Rector travel expense	0.00	625.00	0.00	2,500.00	3,690.17	2,500.00	0.00
522 Interim Priest Mileage expense	393.30	168.00	5,243.55	3,300.00	0.00	3,300.00	158.89
523 Supply Priest Mileage	0.00	80.00	459.36	600.00	0.00	600.00	76.56
524 Rector continuing education	0.00	0.00	0.00	0.00	1,200.00	0.00	0.00
525 Rector pension fund	0.00	1,125.00	0.00	4,500.00	13,500.00	4,500.00	0.00
526 Rector health insurance	0.00	2,500.00	0.00	10,000.00	10,860.00	10,000.00	0.00
527 Deacon Expense	0.00	0.00	0.00	400.00	408.85	400.00	0.00
528 Rector housing allowance	0.00	2,775.00	0.00	11,100.00	31,194.36	11,100.00	0.00
529 Rector other	0.00	125.00	0.00	500.00	326.34	500.00	0.00
531 Youth Director/travel expense	0.00	0.00	0.00	200.00	0.00	200.00	0.00
Taxes, Allowances & Benefits Totals:	756.46	7,688.42	10,105.33	36,585.00	64,963.41	36,585.00	27.62
Office & Communications							
551 Supplies	101.56	225.00	2,153.37	2,700.00	2,777.60	2,700.00	79.75

Account Shortcut and Description		Current Month Actual	Current Month Budget	YTD Actual	YTD Budget	YTD Last Year	Annual Budget	YTD as % of Annual Budget
552 Postage		189.00	0.00	1,507.45	1,500.00	1,538.75	1,500.00	100.49
553 Telephone/Internet/Wireless		932.30	316.67	4,508.27	3,800.00	4,420.29	3,800.00	118.63
554 Advertising		170.00	75.00	170.00	150.00	481.93	150.00	113.33
555 Leased equip/maintenance		98.08	916.67	10,315.22	11,000.00	10,212.44	11,000.00	93.77
556 Printing		0.00	0.00	659.00	700.00	294.99	700.00	94.14
557 IT support/software/hardware		186.02	405.00	2,491.24	2,000.00	1,609.16	2,000.00	124.56
558 In Kind Contribution Expense		0.00	0.00	212.48	0.00	1,807.02	0.00	0.00
Office & Communications Totals:		1,676.96	1,938.34	22,017.03	21,850.00	23,142.18	21,850.00	100.76
Other Administration								
610 Diocesan apportionment		5,083.00	5,083.00	60,996.00	60,996.00	58,896.00	60,996.00	100.00
611 Convention expense		0.00	0.00	35.00	1,000.00	756.32	1,000.00	3.50
612 Professional fees		0.00	50.00	1,770.71	2,600.00	2,506.71	2,600.00	68.10
613 Vestry Expense		0.00	8.33	0.00	100.00	390.64	100.00	0.00
614 Dues and subscriptions		20.00	4.17	20.00	50.00	40.00	50.00	40.00
615 Bank service fees		35.29	33.33	468.54	400.00	617.77	400.00	117.13
616 Workers Comp Insurance		0.00	0.00	916.00	910.00	904.00	910.00	100.65
618 New Rector Search/Moving Expense		0.00	0.00	384.00	20,000.00	0.00	20,000.00	1.92
619 Audio, Visual, Virtual Expense		912.04	0.00	1,140.78	0.00	93.18	0.00	0.00
617 Pay Pay Fees		0.00	0.00	35.00	0.00	0.00	0.00	0.00
Other Administration Totals:		6,050.33	5,178.83	65,766.03	86,056.00	64,204.62	86,056.00	76.42
Program Expenses								
621 Adult education		0.00	16.67	132.64	200.00	0.00	200.00	66.32
622 Youth ministry		0.00	(26.08)	43.99	(313.00)	(312.81)	(313.00)	(14.05)
623 Children's ministry		36.97	8.33	44.64	100.00	74.52	100.00	44.64
624 Nursery program		0.00	8.33	0.00	100.00	0.00	100.00	0.00
625 Library/periodicals		0.00	0.00	80.00	100.00	109.84	100.00	80.00
626 Fellowship program		0.00	150.00	1,828.78	2,000.00	1,353.74	2,000.00	91.43
627 EDOK youth events		0.00	0.00	0.00	500.00	27.41	500.00	0.00
628 VBS		0.00	0.00	(854.89)	1,500.00	98.92	1,500.00	(56.99)
629 Other Ministry		0.00	0.00	378.88	0.00	81.48	0.00	0.00
Program Expenses Totals:		36.97	157.25	1,654.04	4,187.00	1,433.10	4,187.00	39.50
Liturgy & Worship								

Account Shortcut and Description

	Current Month Actual	Current Month Budget	YTD Actual	YTD Budget	YTD Last Year	Annual Budget	YTD as % of Annual Budget
631 Altar supplies	41.25	91.67	816.67	1,100.00	1,064.66	1,100.00	74.24
632 Music program	0.00	0.00	0.00	0.00	0.00	0.00	0.00
633 Worship program	0.00	16.67	200.00	200.00	253.17	200.00	100.00
634 Flower Fund	(400.04)	60.00	33.43	720.00	(224.59)	720.00	4.64
Liturg & Worship Totals:	(358.79)	168.34	1,050.10	2,020.00	1,093.24	2,020.00	51.99
640 Stewardship	0.00	0.00	100.00	100.00	0.00	100.00	100.00
Building & Grounds							
650 Lawn maintenance	414.57	0.00	4,145.70	4,650.00	7,000.00	4,650.00	89.15
651 Utilities	1,050.37	1,750.00	16,963.69	21,000.00	19,693.66	21,000.00	80.77
652 Insurance	1,913.40	1,500.00	18,843.00	18,000.00	18,487.40	18,000.00	104.68
653 Maintenance/repairs	863.06	800.00	14,040.42	9,600.00	8,992.62	9,600.00	146.25
654 Supplies	0.00	100.00	2,685.37	2,000.00	1,838.92	2,000.00	134.26
655 Snow removal	0.00	400.00	1,000.00	2,000.00	1,250.00	2,000.00	50.00
656 Janitorial service	875.00	855.00	10,695.84	10,150.00	9,600.00	10,150.00	105.37
658 Building/equipment	5,412.00	333.33	25,792.00	4,000.00	0.00	4,000.00	644.80
Building & Grounds Totals:	10,528.40	5,738.33	94,166.02	71,400.00	66,862.60	71,400.00	131.89
Expense Totals:	24,887.61	30,168.18	275,735.93	316,798.00	334,267.82	316,798.00	87.04
Income - Expense:	(8,780.02)	(3,776.35)	52,166.98	7,879.00	(7,924.17)	7,879.00	

St Stephens Episcopal Church

Dedicated Accounts

December 31, 2020

Account Shortcut and Description	Beginning Balance	Month Credits	Month Debits	YTD Credits	YTD Debits	Ending Balance
Church Operations						
Special Purpose Memo Accounts						
905 Youth Special Activity Account	4,754.75	0.00	0.00	14.99	14.99	4,754.75
906 Columbarium	2,628.39	0.00	0.00	600.00	0.00	3,228.39
907 Music Special Activity Account	3,438.66	0.00	0.00	2,618.25	1,815.92	4,240.99
908 Ice Cream Social	6,039.19	0.00	0.00	0.00	856.47	5,182.72
912 Special Activity/Fund	(1,127.22)	0.00	278.30	11,101.11	13,225.18	(3,251.29)
913 Roof Repairs/Dillions Rewards Combined	12,762.35	0.00	0.00	0.00	0.00	12,762.35
916 Daughters of the King (DOK)	258.45	0.00	0.00	240.25	285.25	213.45
931 United Thank Offering	51.50	0.00	0.00	0.00	0.00	51.50
932 Price Harris/Outreach	30.60	0.00	0.00	750.00	524.46	256.14
910 Sound System Fund	2,165.34	0.00	0.00	0.00	0.00	2,165.34
Special Purpose Memo Accounts Totals:	31,002.01	0.00	278.30	15,324.60	16,722.27	29,604.34
Separate Funds						
900 Memorial Fund (123A)	16,802.11	3.70	14,540.60	15,741.62	16,086.24	16,457.49
901 Rector Discretionary Fund (120A)	450.00	500.00	100.00	1,734.00	100.00	2,084.00
936 Deacon's Discretionary Account (121A)	236.01	0.00	0.00	0.00	0.00	236.01
Separate Funds Totals:	17,488.12	503.70	14,640.60	17,475.62	16,186.24	18,777.50
Investment Funds						
950 Six Month Reserve Fund (127A)	60,238.27	0.00	0.00	168.66	0.00	60,406.93
962 State Farm Life Ins Beneficiary (131A)	33,864.91	0.00	0.00	1,457.58	0.00	35,322.49
940 Repair and Replacement Fund (128)	13,426.80	0.26	0.00	11,226.56	18,650.00	6,003.36
Investment Funds Totals:	107,529.98	0.26	0.00	12,852.80	18,650.00	101,732.78
Endowments						
972 SSEC Permanent Endowment Account (13	0.00	14,525.00	0.00	14,525.00	0.00	14,525.00
970 SSEC Quasi Endowment Account (132)	99,004.53	12,811.70	0.00	33,984.40	23,772.83	109,216.10
Endowments Totals:	99,004.53	27,336.70	0.00	48,509.40	23,772.83	123,741.10
Church Operations Totals:	255,024.64	27,840.66	14,918.90	94,162.42	75,331.34	273,855.72
Total for selected dedicated accounts:	255,024.64	27,840.66	14,918.90	94,162.42	75,331.34	273,855.72



*For news, events and information,
sign up for the weekly E-Notes
like and view our Facebook page
visit our website.*

St. Stephen's Episcopal Church

7404 E. Killarney, Wichita, KS 67206

316.634.2513

Parish Office Hours: Monday-Friday

9:00 am-1:00 pm

Email: ssec@sbcglobal.net

Web Site: www.ststephensec.org

